

uniathena



# Master in **PUBLIC HEALTH**



**Unimarconi**  
LA PRIMA UNIVERSITÀ  
DIGITALE ITALIANA



CAMBRIDGE  
INTERNATIONAL  
QUALIFICATIONS



Chartered  
Management  
Institute



Message From  
**Col (Rtd). Anil Ahluwalia**  
Academic Director  
UniAthena



Westford Education Group, through UniAthena, is dedicated to offering our learners the highest quality international programs from Italy, Spain, the US and other prominent countries. We carefully select our partner universities to ensure that each program is fully accredited, internationally recognized, and industry appropriate. Our teaching staff, learner support staff, and partner staff are focused on one thing: your success, both in the classroom and in your career. And when you join our programs, from any of our partner universities, you will always have Westford by your side, helping you along each step of your path to success.

UniAthena's distinguished international faculties have been educated in renowned universities. Our professors and trainers possess expertise in research and teaching, and they are committed to providing learners with a world-class learning experience. Many members of our faculty also hold significant corporate experience and serve on corporate management boards. Our reports indicate that our graduates leave our programs with the functional industry knowledge they expect from executive education. Our learners move on to become effective leaders and strong team players, with the talent to identify and build opportunities – and we hope to see your success story unfold with us.

We warmly welcome you to UniAthena, the new era of affordable, flexible and accessible learning. I wish you an enriching and enjoyable learning experience and success.

# WHO WE ARE

UniAthena is an Online Learning Platform dedicated to making Higher Education accessible and affordable to Professionals across the globe. We offer self-paced Master, Doctorate, and Microcredit programs in collaboration with European Universities and reputed Professional Qualifications Authorities.



UniAthena is the latest venture of Westford Education Group, a Higher Education Services provider since 2009 providing quality UK, Italian, and Spanish Bachelor, Master and Doctoral level degrees. We have helped millions of learners from around the world achieve their higher education aspirations and through that, their professional goals.



## MISSION

To provide access to affordable quality higher education for masses across the globe, we will ensure to develop an up-to-date curriculum and deploy the latest technology to develop relevant learning models which are scalable, ensuring accessibility and affordability as the key focus of everything we develop.



## VISION

Our vision is to empower people, the privileged and underprivileged, by providing access to higher education that is effective, affordable and flexible without any boundaries.



## VALUES

In upholding our vision, we ensure that the following core values are embedded in the development of the UniAthena Learning Platform and the courses and programs it supports:

- Accessible
- Accredited
- Flexible
- Affordable
- Stackable

# Why UniAthena?

We strive to ensure that learning is seamless and blends with learners' lives.

## Learning Schedules

Programs are offered with either Fixed Learning Duration or Flexible Learning Duration. The 100% Online Delivery & Byte-Sized Content simplified learning on the go.



## Pay per Module/Easy Installments

With UniAthena as your learning partner, you follow a 'Pay as you Go Scheme' for your program, that means no upfront bulk payment of your fee. Instead your fee will be divided into small pocket friendly installments distributed across your program.

## Personal Tutor Support

In this online program, learners are not on their own. Upon enrolment, every learner gets assigned a Personal Tutor who they can reach out to for any academic support.



## Accredited and Internationally Recognised Programs

Our programs are developed and delivered in partnership with globally recognized and accredited universities and Reputed Professional Qualification Authorities.

# Westford Education Group

Westford Education Group was established in 2009, with an objective to fulfill the aspirations of learners with diverse backgrounds from across the globe to attain internationally-accredited qualifications in the form of on-site and online learning interventions.

Working toward a world where everyone has access to higher education, WEG now stands out winning the confidence of its learners and the community, a result of its steadfast commitment to learners' welfare and their success stories.

At Westford, we have come up with an integrated strategy and operational model for global education. The group's overall mission is "enabling the learner of today to become a successful individual of tomorrow."



## Course Overview

UniAthena's Master in Public Health is a specialised academic program that prepares professionals to join and contribute to local, domestic and international efforts to deliver quality healthcare, spread awareness and promote overall wellbeing. With insightful lessons on Public Health Administration, Personnel Management, Environmental Concerns in Public Health, and key fundamental management disciplines, graduates will be ready to promote community health, guide policymaking and increase access to life-saving healthcare. Candidates will be qualified for vital roles in academia, non-profits, and private and public health-care organizations.



## Highlights of this course are:

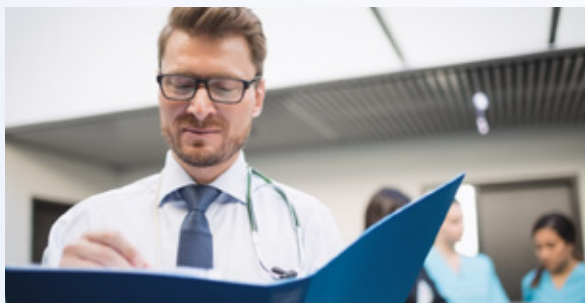
- This **90 ECTS** Master program is offered in partnership with **Guglielmo Marconi University, Italy**.
- Guglielmo Marconi University, **accredited by the Ministry of Education, Italy**, is a member of the Bologna Process in the European Higher Education Area (EHEA) and a **NARIC-approved university**.
- This specialised Master Program will help busy professionals master core competencies in Public Health and Management in a flexible manner.
- Curated by our expert faculty, the course materials and assessments are designed to help learners develop real-life skills that will directly enhance their workplace performance.
- Additional certifications include **Postgraduate Diploma in Public Health** from Cambridge International Qualifications, UK and **Certified Healthcare Management Professional** from Chartered Management Institute, UK (Optional).
- Learners will receive a complimentary one year membership to Chartered Management Institute (CMI), UK.
- Learners can attend the Annual Convocation hosted by GMU in Italy.

---

## Why this Course?

### Build Real-Life Competencies:

UniAthena's Master in Public Health offers a curriculum that was developed to prepare professionals to tackle the daily challenges of Public Health roles, from personnel management to environmental issues.



### Qualify for Public Health Roles:

Professionals armed with Public Health Masters program can be eligible for several notable roles in this industry, including Community Health Worker, Emergency Management Specialist, Policy Analyst, Epidemiologist, and so on.

## Experience Tailored Learning:

The Master program in Public Health was developed to accommodate the hectic schedules of busy professionals. Featuring 100% online learning, flexible learning plans, and personal tutor support, learners will receive the guidance needed to achieve their academic goals without overwhelm.



---

## Certifications included in this course

- **Master in Public Health** issued by Guglielmo Marconi University, Italy.
- **Postgraduate Diploma in Public Health** issued by Cambridge International Qualifications, UK.
- **Certified Healthcare Management Professional** issued by Chartered Management Institute, UK (Optional).





"The MPH program has equipped me with essential tools to excel as a psychiatrist, clinical educator, researcher, and QI specialist, and I am grateful for the opportunity to learn from such dedicated professionals."

**Anatolii Tsarkov**

Psychiatrist, Clinical Educator &  
Mental Health Researcher  
Ukraine

My Master in Public Health (MPH) program has been a transformative experience that has significantly enhanced my management, leadership, and research skills. It provided me with a comprehensive understanding of public health principles and practices, empowering me to drive impactful quality improvement (QI) initiatives in my roles as a psychiatrist and clinical educator.

As a QI lead and specialist, I leveraged the knowledge and skills from my MPH studies to refine QI processes within clinical and educational settings, resulting in more efficient workflows, improved patient outcomes, and a stronger emphasis on evidence-based practices. My enhanced ability to analyze complex data, design robust research studies, and implement sustainable changes has enabled me to make meaningful contributions to psychiatry and medical education.

A significant part of my success can be attributed to the exceptional mentorship of my tutor and research supervisor, Ankita Jawalkar. Her deep knowledge, personal skills, and unwavering support have been instrumental in my academic and professional development. Ankita's ability to inspire and motivate has instilled in me a passion for continuous improvement and lifelong learning.

The MPH program has equipped me with essential tools to excel as a psychiatrist, clinical educator, researcher, and QI specialist, and I am grateful for the opportunity to learn from such dedicated professionals.

**Master in Public Health | Batch 2023**

# How you Learn

We have developed a learning pedagogy which ensures that the learners will be able to learn the course successfully, regardless of whether the learner is a beginner or an expert.

## Video Classes

The well-developed customised online video lessons designed by our faculty will lay the foundation for your learning.



## Text Learning Contents

Multi-level learning resources developed by our faculty, including relevant journal articles, case studies, quizzes and others will enhance your learning experience. These will help you get a multidimensional perspective on the topics in the units.

## Collaborative Learning

Webinars will extend your learning beyond the curriculum and open a new world before you.



## Online Library

You get unlimited access to the online library which consists of a large collection of books, journals, articles, white papers, videos, case studies and other publications.

## Personal Tutor

One-to-one personal tutor meetings will clarify your doubts and also provide guidance on your assignments.





“The distance learning format provided incredible flexibility, allowing me to balance my studies with my professional and personal commitments seamlessly”.

**Benedetta Bedetti**

Area Coordinator  
Stuttgart Render CGI  
Italy

I recently completed my Master in Public Health awarded by GMU, Italy through UniAthena, and the experience was truly exceptional. The distance learning format provided incredible flexibility, allowing me to balance my studies with my professional and personal commitments seamlessly. The courses were very well-designed, with comprehensive and engaging materials that made learning both enjoyable and effective. Throughout my journey, the support from my tutors was invaluable; they were always available to provide guidance, answer questions, and offer encouragement. My dissertation tutor, Ms. Ankita Jawalkar, was particularly remarkable, offering insightful feedback and unwavering support that was instrumental in shaping my dissertation and gave me the confidence to produce a high-quality piece of innovative research. The programme itself was ideally structured, facilitating a deep understanding of public health principles while equipping me with practical skills applicable in the real world. Ultimately, UniAthena’s commitment to excellence and education is evident, and I am grateful for the enriching experience.

**Master in Public Health | Batch 2022**

# Guglielmo Marconi University, Italy



Guglielmo Marconi University (GMU) is based in Rome, Italy, and is recognized by the Ministerial Decree of March 1, 2004. GMU's main campuses are based in Rome and are located around the Prati and Vatican neighbourhoods. Currently, GMU has more than 16,000 learners enrolled in graduate and postgraduate programs, 300 faculty members, and a team of 200 expert advisors.

The central administrative offices, studios, academic departments, and the majority of the university facilities are situated on the main campus. GMU distinguishes itself through its operational blended format, which combines online and traditional academic programs. This format provides learners with a valuable experience both online and offline, by preserving face-to-face interactions with professors, seminars, and lessons within the athenaeum and granting access to intranet and institutional resources.

Since 1999, Italian universities have abided by the 'Bologna Process', launched with the Bologna Declaration of 1999 and defined by the European Higher Education Area (EHEA). In relation to this reform, the university is a system organized into 3 cycles: bachelor's degrees, master degrees, and doctorates in different schools.



# Cambridge International Qualifications, UK



Cambridge International Qualifications (CIQ), UK is a professional awarding body based in the United Kingdom. CIQ is founded on the vision of helping individual learners and employers in attaining quality accredited awards. With centers across the Middle East, Europe and the African region, CIQ is a proud certification partner for more than 100 organizations and has a progression pathway with some of the leading universities across the world.

CIQ offers credit-rated programs under Scottish Credit Qualification Framework (SCQF) through the credit rating agency Scottish Qualification Authority which enables the learner to attain UK-regulated qualifications. Apart from the credit-rated programs, CIQ also offers stand-alone professional diploma and certification programs which have been developed based on the current need of the industry. CIQ also partnered with NCFE-UK (Northern Council for Further Education) and TQUK (Training Qualifications, UK) for joint certification for the courses developed by CIQ.

CIQ has gained a reputation for the high-quality support services provided to the education sector. It works with schools, colleges, universities, and corporate bodies as well as Government agencies to provide relevant, effective, and flexible programs. Their qualification and assessment framework is up-to-date, result oriented and meets the defined values as per international standards. CIQ qualifications are approved for progression to higher qualifications offered by International Universities around the globe.

The CIQ qualification and assessment framework have been developed in consultation with leaders from various corporate bodies, government agencies, and universities around the world. CIQ programmes are frequently assessed to enhance quality and ensure they are relevant for the rapidly changing global market as well as career opportunities for ambitious individuals. The CIQ Qualification and assessment framework is available throughout the world and may be accessed via their “Approved Centre Network”.



# Chartered Management Institute, UK



Chartered Management Institute, backed by Royal Charter, is the only Chartered body dedicated to promoting the highest standards in management and leadership excellence. CMI's management qualifications are recognized throughout the UK and Europe and provide a progressive framework that enables one to develop and broaden management skills. Their qualifications are designed in consultation with employers to meet today's demands and therefore it is valued by them.

Their certification is flexible. One can study locally via their 600+ approved centres or through a Distance Learning Provider. Their resources are designed specifically for the qualification to ensure that the learner has the correct support and free access to all key membership services for the duration of his study.

Practical help whenever you need it; tools and techniques to save time and stress; new ways to enhance your professional reputation; qualifications that show the world you mean business – that's what CMI is all about.



# Modules

Module Name	Credits (ECTS)
<b>Part A</b>	
Principles of Public Health Administration	10
Personnel Management & Leadership in Public Sector	10
Financial Management in Public Sector	10
Mid Term Project	10
Environmental Health Issues in Public Health Practice	10
Operations & Project Management in Public Sector	10
Principles of Biostatistics <b>(Elective 1)</b> Principles of Epidemiology <b>(Elective 2)</b>	10
<b>Part B</b>	
Research Methods	8
Research and Dissertation	12
<b>Total Credits</b>	<b>90</b>

# Module Description

## Principles of Public Health Administration

Level: EQF Level 7  
Credits: 10 ECTS

This module introduces learners to the fundamental concepts of planning, management, and administration within the Public Health sector.



## Personnel Management & Leadership in Public Sector

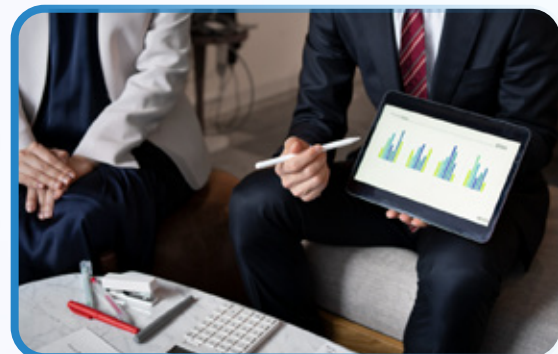
Level: EQF Level 7  
Credits: 10 ECTS

This module aims to improve the knowledge and skills related to Personnel Management. It will also help learners to enhance their Personnel Leadership qualities.

## Financial Management in Public Sector

Level: EQF Level 7  
Credits: 10 ECTS

This module covers the procedures and processes of Public Financial Management, enabling learners to gain a comprehensive understanding of the subject.



## Mid Term Project

Level: EQF Level 7  
Credits: 10 ECTS

The Mid Term Project in an MBA or Master's program allows students to apply theoretical concepts to real-world business problems. It involves analyzing a relevant case, using analytical tools, and proposing solutions. This project enhances problem-solving, research, and communication skills, preparing students for future leadership roles.

## Environmental Health Issues in Public Health Practice

Level: EQF Level 7  
Credits: 10 ECTS

Through this module, learners will be able to understand the existence and effect of environmental health issues in the field of public health practice.



## Operations & Project Management in Public Sector

Level: EQF Level 7  
Credits: 10 ECTS

This module focuses on teaching the learners about functions and strategies involved in Operations and Project Management when dealing with the Public Sector.

## Principles of Biostatistics (Elective 1)

Level: EQF Level 7  
Credits: 10 ECTS

This module will introduce learners to the methods of summarizing data, measures of health and illness, the application of AI and Machine Learning in Biostatistics, and more.



## Principles of Epidemiology (Elective 2)

Level: EQF Level 7  
Credits: 10 ECTS

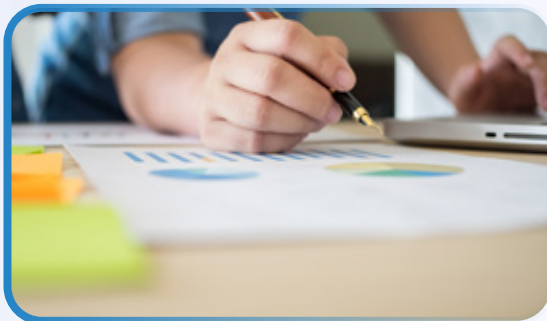
This module introduces learners to key concepts in epidemiology, measures of health and illness, and analytical epidemiology methods.

## Research Methods

Level: EQF Level 7

Credits: 8 ECTS

This module emphasizes research ethics, empowering learners to address ethical considerations and enable independent research using quantitative and qualitative techniques.



## Research and Dissertation

Level: EQF Level 7

Credits: 12 ECTS

The dissertation is an opportunity for learners to demonstrate their ability to investigate issues of their own choice over a significant period of time.

---

## Assessment

Each module will be assessed through a combination of formative and summative assessments. Formative assessment will follow a continuous assessment strategy that will include unit-wise assessments, followed by a summative assessment that is formulated to be more aligned with personal reflection questions that are mapped against the expected learning outcomes of the module.

Research and dissertation will be supported by a supervisor appointed by UniAthena, and the learner is expected to submit an extensive report of 12,000 words. At this stage, learners will have the option to choose a business project instead of a dissertation.



"The entire experience was fantastic, and it was very flexible within my work periods, and the teaching methodology and approach are amazing."

**Jamal Mustafa**

Requirements and System Assurance Engineer  
Webuild Neom High Speed Railway Project  
Saudi Arabia

I had been dreaming for years of getting a master's degree because I wanted to study, develop, and overcome obstacles. Even though I knew the voyage would try every fiber of my strength, I was prepared to accept it when the time came. I decided to finish my ideal Master in Engineering Management degree at UniAthena. The entire experience was fantastic, and it was very flexible within my work periods, and the teaching methodology and approach are amazing.

**Master in Engineering Management | Batch 2023**



## Eligibility Criteria

### Academic Route

A bachelor's degree from an accredited university (or academic equivalent) in any subject.

### Mature Entry Route

If you don't have a Bachelor's degree, you can apply through our mature entry route. You'll need to provide evidence of 5 years (Minimum) of relevant managerial work experience, along with certificates of your highest diplomas/degrees/professional certifications and an updated resume. Applications are assessed on a case-by-case basis. Please send these details to [admissions@uniathena.com](mailto:admissions@uniathena.com). Applicants should be 23 years of age or above. Admission through Mature Entry Route will be subject to the discretion of the UniAthena and the respective Awarding Bodies/Universities. Applicants admitted to the program via the Mature Entry Route are required to obtain their Post-graduate Diploma Certificates as a mandatory step.

### English Language Proficiency

If you are not a native speaker, you should have an appropriate English proficiency level, e.g. an IELTS score of 5.5 or equivalent in all bands or possess a bachelor's degree delivered and assessed in English, or proof of work experience in an English-speaking environment.

# Fee & Charges

## Fixed Plan

Registration Fees	<b>\$500</b> (To Start With The Course)
Course Fee	<b>\$3800</b> (To Be Paid On A Monthly Basis, \$380 Per Month, Total 10 Installments)
PGD-CIQ Certification Fee	<b>\$300</b> (On Completion Of Course Modules)
Course Certification Fee	<b>\$1000</b> (To Be Paid Upon Successful Completion Of The Program)
<b>Total Fee</b>	<b>\$5600</b>
CMI Certificate Fee	<b>\$300</b> (Optional)

## Flexible Plan

Module Fee	<b>\$4300</b> (\$530 for the first 7 modules and \$590 for the 8th module)
Dissertation Fee	<b>\$1000</b> (To Be Paid In 2 Installments Of \$500 Each)
PGD-CIQ Certification Fee	<b>\$300</b> (On Completion Of Course Modules)
Course Certification Fee	<b>\$1000</b> (To Be Paid Upon Successful Completion Of The Program)
<b>Total Fee</b>	<b>\$6600</b>
CMI Certificate Fee	<b>\$300</b> (Optional)

# Study Remote

## Graduate in Italy

Upon successful program completion, students will get the opportunity to graduate from Guglielmo Marconi University, Italy, and participate in the prestigious convocation ceremony held there.



**Apply Now**

[Connect to Admission Counsellor](#)

 [E - Mail](#)



# uniathena

**UK**  
**Athena Global  
Education LTD**

9A, Midas Tower Phase 1,  
Hinjewadi Rajiv Gandhi  
Infotech Park Pune - 411057  
Phone: +91 9145665544

**UAE**  
**Athena Global  
Education FZE**

Block L-3, First Floor,  
Sharjah Publishing City  
Free Zone, Sharjah, UAE  
Phone: +971 65 31 2511

**India**  
**UniAthena  
Private Limited**

9A, Midas Tower Phase 1,  
Hinjewadi Rajiv Gandhi  
Infotech Park Pune - 411057  
Phone: +91 9145665544